

# SpeedFace-V4L

Linux-Based Hybrid-Biometric Access Control & Time and Attendance Terminal with Visible Light Facial Recognition & Palm Recognition



Compatible with  
**ZKBio Access IVS**

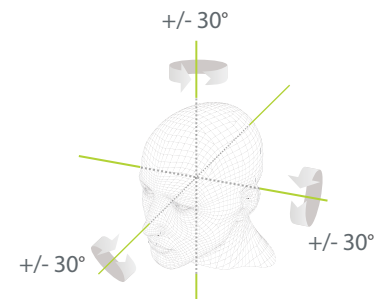


## Features

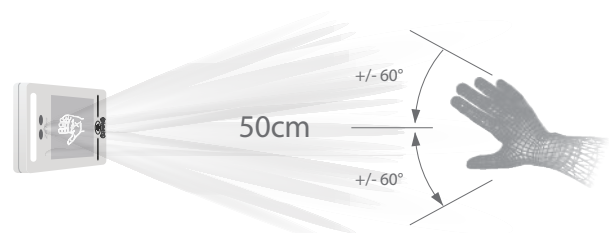
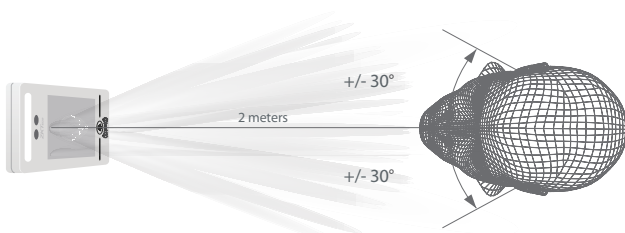
- Visible Light Facial Recognition
- Anti-spoofing algorithm against print attack (laser, color and B/W photos), videos attack and 3D mask attack
- Multiple verification methods: Face / Palm / Card / Password
- Available card modules: 125kHz ID card (EM) / 13.56MHz IC card / HID card / Felica card
- Supplement light with adjustable brightness
- 800 face templates capacity, 800 palm templates capacity

## 2 meters of recognition distance and extra wide angle recognition

The recognition distance has been greatly extended to 2 meters, which significantly improves the maximum traffic rate. While most of the algorithms only support +/-15° of detectable face angle, SpeedFace-V4L doubles the detection angle in terms of head rotation and tilt to +/- 30°.



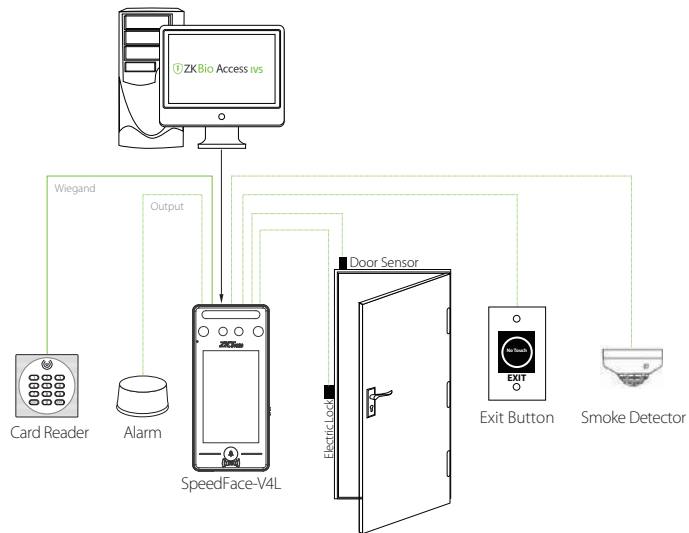
Touchless palm authentication method with a novel hand tracking technique allowing angle tolerance as wide as +/-60° in the roll axis and a recognition distance of 50cm.



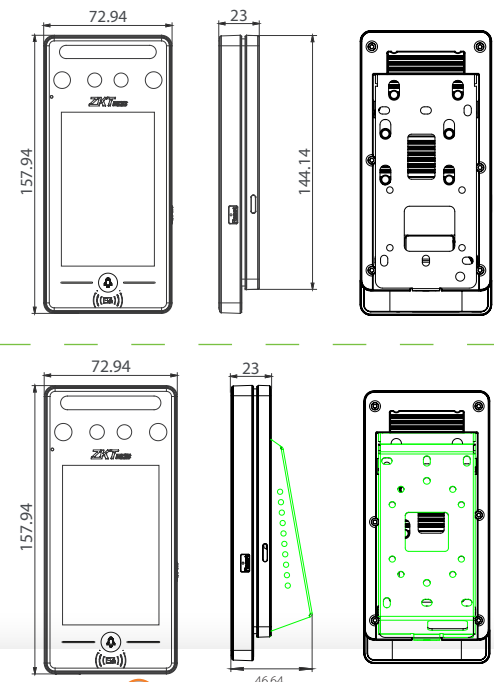
# Specifications

Display	4" touch screen
Face Capacity	800
Palm Capacity	800
Card Capacity	1,000
Transactions	150,000
Operation System	Linux
Standard Functions	ID Card, ADMS, T9 Input, DST, Camera, 9-digit User ID, Access Levels, Groups, Holidays, Anti-passback, Record Query, Tamper Switch Alarm, Multiple Verification Methods, Palm Recognition, WiFi
Hardware	900MHz Dual Core CPU; 512MB RAM / 512MB Flash; 2MP Binocular Camera; Adjustable LED Supplement Lighting
Communication	TCP/IP, USB Host, WiFi, Wiegand Input/Output, RS485
Access Control Interface	3rd-party Electric Lock, Door Sensor, Exit Button, Alarm Output, Auxiliary Input
Optional Function	13.56MHz IC Card, HID card, Felica card, SRB Function, Cable Box
Facial Recognition Speed	≤1s
Biometrics Algorithms	ZKFace V5.8 & ZKPalm V12.0
Power Supply	12V 3A
Working Humidity	10% ~ 90%
Working Temperature	0°C ~ 45°C (32°F ~ 113°F)
Dimensions (W*H*D)	72.94 * 157.94 * 23 (mm)
Net Weight	260g
Gross Weight	850g
Supported Software	ZKBioAccess IVS

# Configuration



# Dimensions (mm)



## TUNISIE

Sfax: Av de la Liberté, Imm. El Itkan 3<sup>ème</sup> étage, B11, CP. 3027  
 ☎(+216) 74 415 055 / 📠(+216) 74 415 044  
 Tunis: 7, rue du Lac Côme, Imm. Nessima, 1<sup>er</sup> étage, B1, B2 & B3  
 Les Berges du Lac, CP.1053. ☎(+216) 71 655 261  
 Sousse: Av. Yasser Arafat, Résidence Chaima, 4<sup>ème</sup> étage,  
 B 401, Sahloul, CP. 4054. ☎(+216) 73 368 115



## ALGÉRIE

Alger: Cité 420 logements, bâtiment 17 n°1 El Hamiz, Dar  
 El Beida, CP. 16033, Alger  
 ☎+213 770 947 069 / +213 770 945 731



## SÉNÉGAL

Dakar: 25, Avenue Pasteur, RDC Imm. Pasteur, CP. 10200  
 ☎+221 78 147 82 73 / +221 33 821 85 38



## MAURITANIE

Nouakchott: Tavrigh-Zeina, Avenue  
 Mokhtar Oulf Daddah  
 ☎+222 49 12 14 94



## FRANCE

Paris: 128 Rue de la Boétie 75008  
 ☎+33 6 17 54 78 03

**asm**  
 All Soft Multimedia

